



December 2023



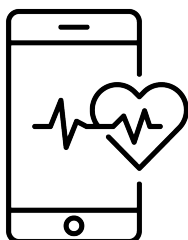
Health Disparity Research

We know medical advances and treatments are only valuable if they reach the people who most need them. That's why researching disparities in neurological care and treatment is a priority.

Here are key findings from our health disparity research presented at medical meetings in 2023.

Telemedicine Utilization: AAN, CMSC, AAIC, NMA, ECTRIMS

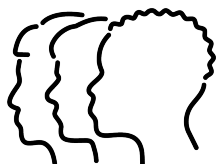
The COVID-19 pandemic expanded telemedicine (TM) care among people with Alzheimer's disease (AD), multiple sclerosis (MS), and Parkinson's disease (PD), but disparities in utilization remain. To learn more, we evaluated TM use nationally across these neurological disorders and at a large academic MS center (Cleveland Clinic).



- + TM users were more likely to be female and enrolled in Medicare, with a mean age similar to nonusers (60.5 and 61.5 years)
- + More TM users lived in western and eastern regions than nonusers, with the highest proportion of TM users found in Massachusetts, Vermont, and California
- + Older, Black, and non-English speaking people with MS and those with lower socioeconomic status experienced the most notable disparities in TM utilization at Cleveland Clinic

Specialist Referral Patterns: AAIC, ECTRIMS, MDS

Claims data from a retrospective cohort study evaluated referral rates from primary care clinicians to specialists and wait times for a first specialist visit among people with cognitive impairment disorders, including Alzheimer’s disease (CIDiAD) as well as PD or a PD-related disorder (PD-RD) and MS.

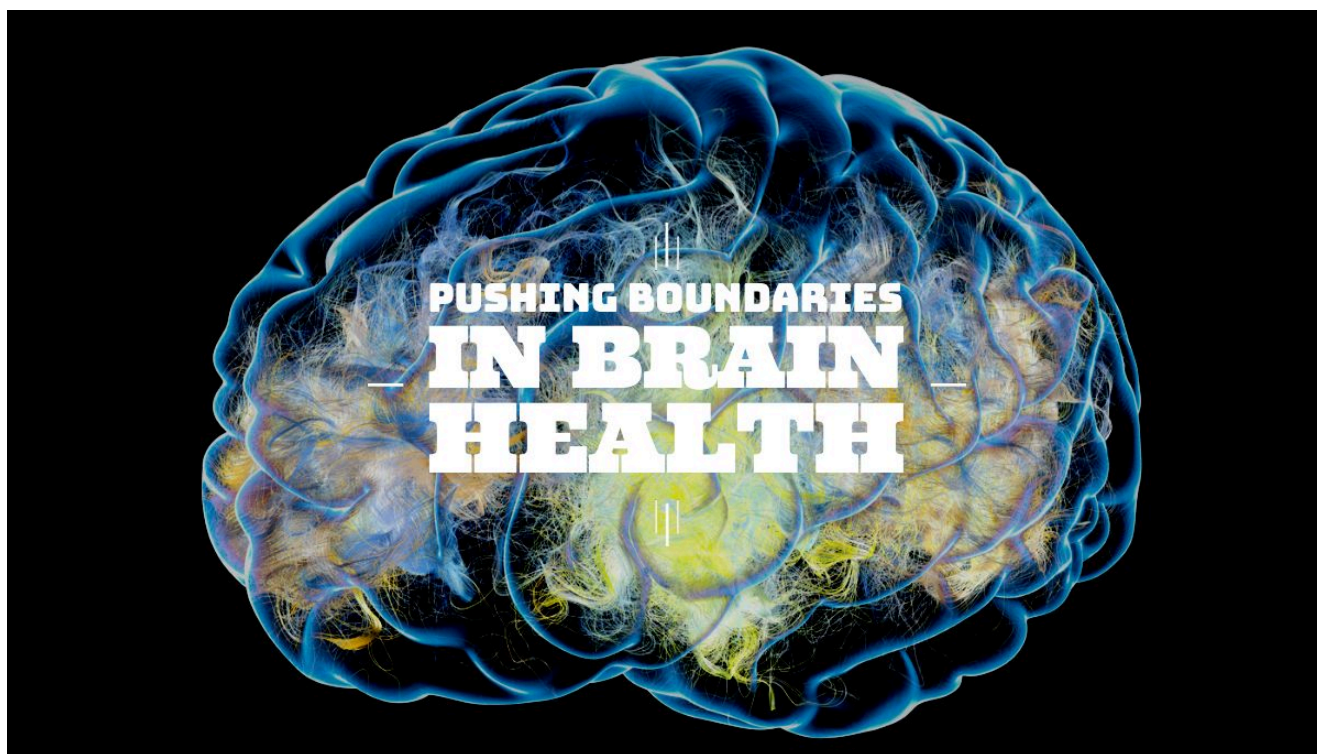


+ Referrals to a specialist occurred in ~30% of people with CIDiAD, ~50% of people with PD or PD-RD, and ~40% for MS

+ The median time to first specialist visit was 10 months for people with CIDiAD, 6 months for people with PD or a PD-RD, and 3 months for MS

+ Referral rates for CIDiAD were lower for females and Hispanic or Asian individuals. Referral rates for PD or PD-RD were lower for males and African American, Asian or Hispanic individuals.

+ Across all three indications, referral rates were lower for those ≥75 years old and people living in the Southern or Western US



How is Genentech pushing the boundaries in neuroscience research and advancing the understanding of brain health?

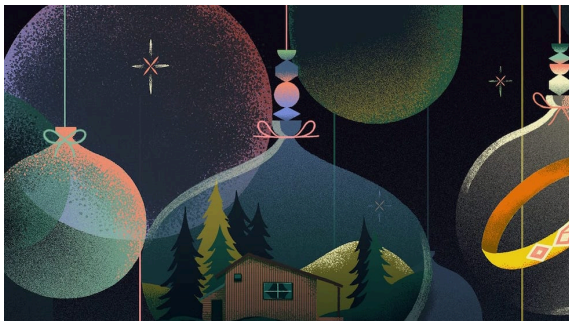
Executive medical director Dalia Moawad answers these questions and more in her *Neurology Today* byline.

[Read Full Article](#)

[Subscribe](#)

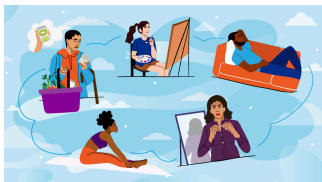
[Past Issues](#)

[Translate](#) ▼



Top Stories

We're motivated by helping people live their best lives beyond neurological disease, and their experiences reinforce the urgency of our research. We asked a few community members to share their stories with us, and hope you find them as inspiring and moving as we do.



Sometimes the effects of multiple sclerosis (MS) are visible. Other times they are not - but can be just as debilitating. Marti and Brittany get personal in this article about the invisibility of MS disability.

[Read More](#)



Advocates from The Guthy-Jackson Charitable Foundation and The Sumaira Foundation joined us for a Q&A about the importance of raising neuromyelitis optica spectrum disorder (NMOSD) awareness.

[Read More](#)



Check out this story about Elayshia rolling into young adulthood with spinal muscular atrophy (SMA) while navigating the challenges that come with living in a world that wasn't built for her.

[Read More](#)

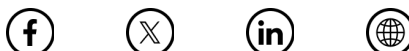
We'd love your feedback!

Please take a minute to answer one question to help us improve and better serve you.

[Take Survey](#)



You are receiving this email because you have signed up to receive updates about Genentech's perspectives on the science, care and treatment of neurological conditions.



[Subscribe](#)

[Past Issues](#)

[Translate ▼](#)

Our mailing address is:
Genentech
1 DNA Way
South San Francisco, CA 94080

[Add us to your address book](#)

If at any time you no longer wish to receive emails from us, you can [unsubscribe from this list](#) or [unsubscribe from all Genentech email communications](#).

[View this email in your browser](#)

This email was sent to <<Email Address>>

[why did I get this?](#) [unsubscribe from this list](#) [update subscription preferences](#)

Genentech · 1 Dna Way · South San Francisco, CA 94080-4918 · USA